

PART OF THE EAST HALF OF SECTION 13,
TOWNSHIP 18 NORTH, RANGE 19 EAST, W.M.

BK 29 OF SURVEYS
PAGES 217-220

BK 23 OF SURVEYS
PAGE 162

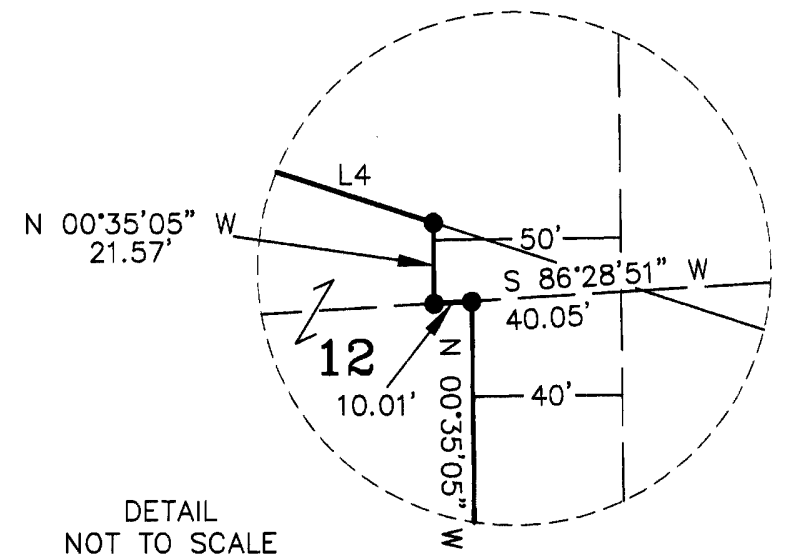
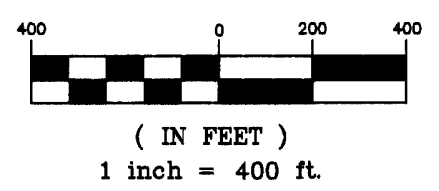
BK 26 OF SURVEYS
PAGE 84



LEGEND

- SET 5/8" REBAR W/ YELLOW CAP - "CRUSE 36815"
- FOUND PIN & CAP
- x— FENCE

GRAPHIC SCALE



DETAIL NOT TO SCALE

AUDITOR'S CERTIFICATE

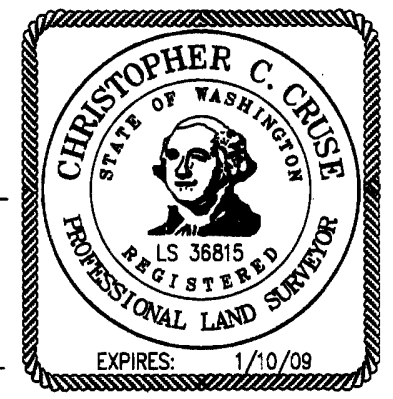
Filed for record this 19TH day of JUNE, 2007, at 12:32 P.M., in Book 34 of Surveys at page(s) 72 at the request of Cruse & Associates.

JERALD V. PETTIT, Auditor
KITTITAS COUNTY AUDITOR

SURVEYOR'S CERTIFICATE

This map correctly represents a survey made by me or under my direction in conformance with the requirements of the Survey Recording Act at the request of CRAIG SCHNEBLY in AUGUST of 2006.

Chris Cruse
CHRISTOPHER C. CRUSE
Professional Land Surveyor
License No. 36815

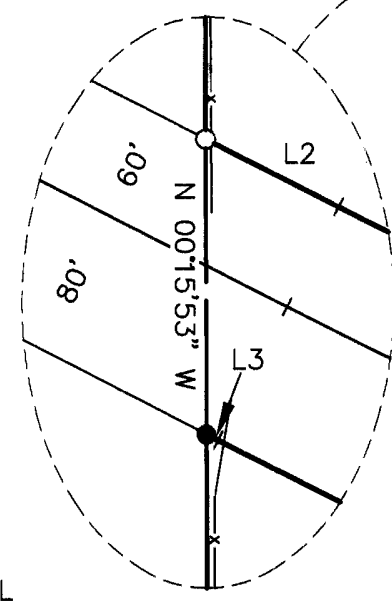


JUNE 19, 2007
DATE

CRUSE & ASSOCIATES
PROFESSIONAL LAND SURVEYORS
217 East Fourth Street Ellensburg, WA 98926 P.O. Box 959 (509) 962-8242

SCHNEBLY PROPERTY

LINE	DIRECTION	DISTANCE
L1	N 71°58'59" W	453.45'
L2	N 62°53'59" W	79.41'
L3	S 62°53'59" E	6.95'
L4	S 71°58'59" E	500.56'



DETAIL NOT TO SCALE

	X	X
	X	X
	X	
	X	